

BOS Containers for Self Storage facilities



... found in urban storage parks



... and parks in areas of 'outstanding natural beauty'



An ideal solution for outside storage parks



Can be connected in different combinations to suit the needs of your client!



2 x 2 metre = 8cbm
6' x 6' = 43ft²



3 x 2 metre = 12cbm
9'10" x 6' = 56ft²



4 x 2 metre = 16cbm
13' x 6' = 68ft²



6 x 2 metre = 20cbm
19'8" x 6' = 79ft²



4 x 6 metre = 24cbm
13' x 19'8" = 258ft²



5 x 6 metre = 30cbm
16' x 19'8" = 323ft²

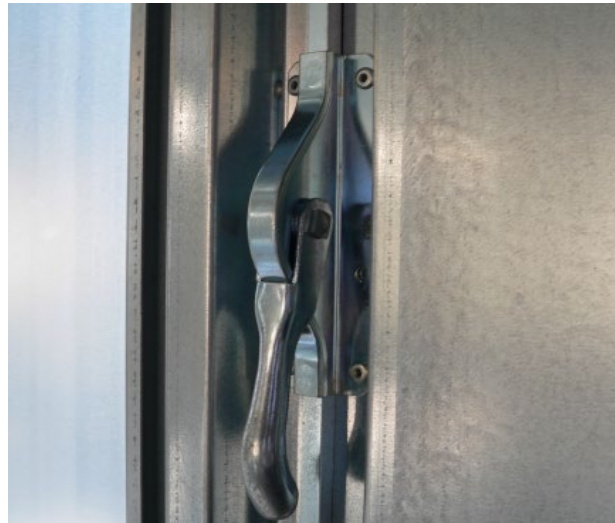
Suitable for all environments

- from the extremes of hot and cold in the Arizona Desert
- to snow and cold in the Rocky Mountains
- to the often grey and damp Northern Europe



Contemporary Design – made for purpose

- Easy to open and secure and accessible for all.
- Locking systems – perfect for ‘unmanned’ secure storage parks



Easy to assemble

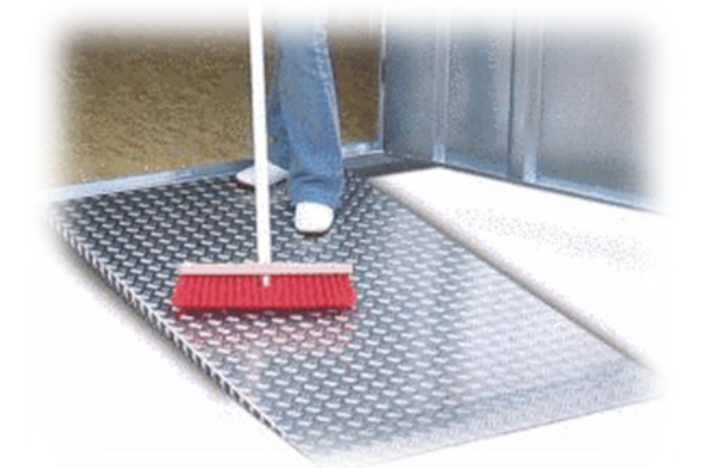
Use your
device to
link to
YouTube



Enhance the customer experience

CSTA Report to Industry – January 2022

- Anti condensation is used by around 12% of the self storage industry
- Shelving is used by around 5%
- Power is used by around 4% of units
- Ramps are available to assist specific access requirements



Made in Germany in an environment carefully managed to control

- the quality of the product
- the safety of our workers
- the environmental impact of our administration, factory and output
- to actively work in reducing our energy use and carbon footprint



Quality



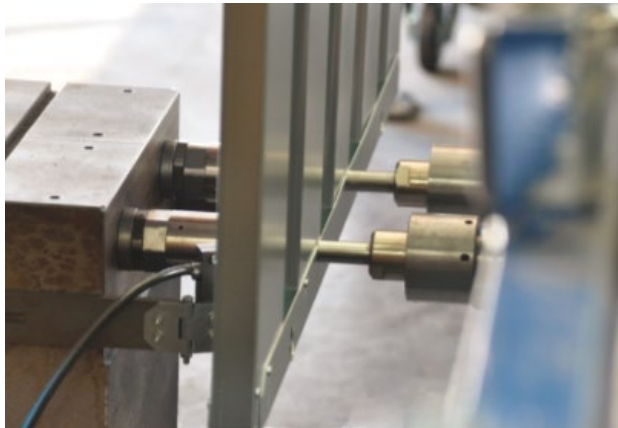
Environment



Safety



Energy



Best Point connection to avoid welding and subsequent corrosion

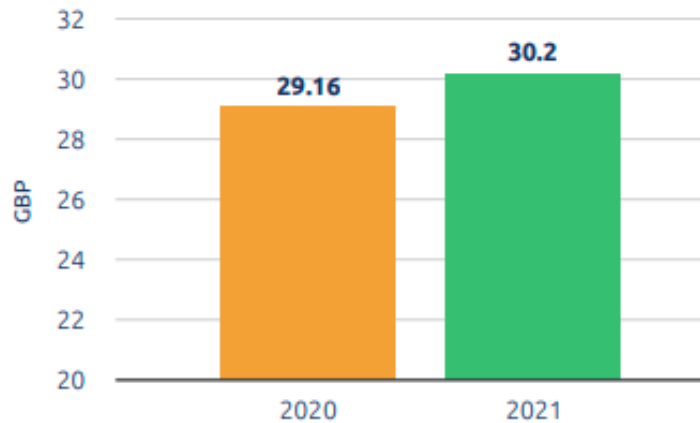


Steel produced in Europe using high levels of recycled material



Factory with carefully managed carbon footprint

**Average Weekly Rental Rates (GBP)
December 2021**



Reported rental rates varied between £22 to £45 per week (excluding VAT). Rates vary by location - the container self-storage facilities in urban conurbations mostly generate the higher rates, although this is balanced by often higher business costs, e.g. land, business rates and management costs.

Payback on a 3m x 2m unit in just over 12 months.

CSTA Container Self-Storage Census 2021

- German quality
- Excellent value
- Satisfied customers
- Repeat business
- Outstanding 'lifetime' values – 10 Year corrosion guarantee
- Supreme standard of service
- Partnership in business



Technical Description

Storage Industry Container SC 3000

CONSTRUCTION

- Tool-free assembly, quick and easy, with 2 people in 5 minutes (Example: 3x2m)
- 4 jack rings for comfortable transportation
- Metal runners for fork-lift transport and ground ventilation
- Best-Point-Technology (joining process, the protective zinc coating is not damaged)

MATERIAL

- Galvanized sheet steel S220 GD Z; 1.0241 and S250 GD Z; 1.0242
- Surface: MB, hot-dip galvanized
- Trapezoidal sheet thickness: 0.8mm
- Profile thickness: 1.5mm or 2mm

OSB FLOOR

- OSB/3 panel for use in structural applications in humid areas in accordance with EN 300
- Panel thickness: 18mm
- Load bearing capacity: 500kg/m²
- Fully PMDI (formaldehyde free) glued, low-emission (E1)
- Guaranteed pest free (IPPC standard)
- European building material classification according to EN 13501-1: D - s2, d0

SAFETY

- GS-Mark from TÜV North

CRANE HANDLING

- SC3000-1x2: 1 ton permissible total weight
- SC3000-2x2: 2 tons permissible total weight
- SC3000-3x2 to 6x2: 3 tons permissible total weight

SNOW LOAD

- 2.10kN/m²

WIND LOAD

- All wind zones possible



SC3000	1x2	2x2	3x2	4x2	5x2	6x2
Width external/internal (mm)	2100/1975	2100/1975	2100/1975	2100/1975	2100/1975	2100/1975
Length external/internal (mm)	1100/975	2100/1975	3100/2975	4100/3975	5100/4975	6100/5975
Height external/internal (mm)	2100/1935	2100/1935	2100/1935	2100/1935	2100/1935	2100/1935
Weight (kg)	220	325	410	515	600	705

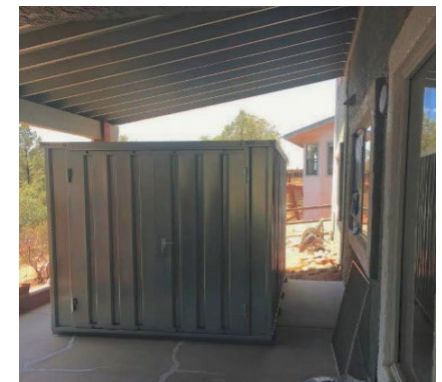
- SZ (in front face, double door), 1950 x 1890mm (clearance dimensions: 1958 x 1855mm)
- SZS (in front face, double door, narrow), 1550 x 1890mm (clearance dimensions: 1558 x 1855mm)
- SE (in front face, single door), 1150 x 1890mm (clearance dimensions: 1158 x 1855mm)
- LE (in side wall, single door), 1150 x 1890mm (clearance dimensions: 1158 x 1855mm)
- LZ (in side wall, double door), 1950 x 1890mm (clearance dimensions: 1958 x 1855mm) (no GS-Mark)
- Entrance height: approx. 120mm
- With mortise lock (according to DIN 18251-1) and profile cylinder (PZ 25/25), including 3 keys
- Short plate and door handle pair in aluminium
- Flat-packed or assembled delivery

DELIVERY

BOS containers can also be used



- within buildings
- on top of buildings
- on building sites
- in parks
- when moving house
- in event management
- for extra space during renovation
- in emergency and disaster relief



BOS Quick-Build-Container used in Storage Facilities – Worldwide



BOS Best Of Steel are the market leaders and one of the largest producers in Europe of Quick-Build storage containers and warehousing. The company has been manufacturing containers for more than 40 years. A few questions to Matthew Jones, UK sales manager:

Q: BOS GmbH was founded more than 50 years ago. Why containers?

BOS has always been an innovative company. In 1979, Bernhard Ohmen sat down with his engineering team to see how they could manufacture a 'materials container' as an alternative to the shipping container, widely used for the storage of materials throughout the world. He was looking for a solution which used less steel but which, through ingenious design, could deliver a product which had the material strength needed for the secure storage of materials in places like building sites, parks and hospitals, and to satisfy the needs of the storage industry. He was also seeking a solution which offered more versatility; easy to move, open and secure, extendable, and with ease of assembly. In 1980, in North Rhine-Westphalia, Germany, the first material container was manufactured, and the product launched.

Q: In the past the storage industry has used shipping containers. However, many are recognizing the benefits of your approach. Why is this?

A: BOS containers are durable quality products and even units sold at the turn of the millennium can still be found in great condition. Manufactured from galvanized high grade steel sheet, all connections are made using 'Best Point' technology. This is a clinching technique from the car industry where the protective zinc coating is not damaged, and welding is avoided.

Many choose to leave the containers in the original galvanized finish, or they can be factory painted or you can paint them yourself.

Q: Often clients have problems opening their containers. Do you have a solution?

A: Doors can be wide singles, pairs, placed at the end or anywhere on the long side of the unit. In place of heavy doors, our doors can be operated by anyone of any age and physical ability. A lever handle operates a latch and the door is locked by key. The locks can be 'master keyed', providing a key for the client and one for safe retention by you. In the case of non-payment, locks can be quickly changed. Different locking systems can be incorporated at the time of manufacture. Additional locking devices can be added with ease.

Q: What standard of quality can the client expect?

A: As you may expect, the people and processes are driven by well-respected local and international standards. To begin with, ISO 9001 is the backbone of our quality control systems which took us to OHSAS 45001 for Occupational Safety. We are particularly proud of our commitment to the environment and now employ the standards of ISO50001 for Energy, Eco-Profit and EMAS and the EU Eco-Audit Regulator to ensure our materials, carbon footprint and wastage are managed with care.

For more information, contact us:
BOS GmbH Best Of Steel
Lütkenfelde 4, D-48282 Emsdetten
Phone: +49 (0)2572 203-170
E-Mail: Container@BestOfSteel.de
www.Container-BestOfSteel.de



Q: What are the main differences between a BOS Quick-Build-Container and the classic welded container?

A: Units are easy to assemble, easy to move and manufactured in a size that best suits you and the use of your client. Smaller units to empty a single room or to store a precious motorcycle. 8m², 12m² and 16m² are the most popular, however, units can also be connected for more specialized storage requirements.

Because the units are easy to assemble, they are perfect for 'indoor' solutions too, perhaps taking advantage of empty spaces in city centre locations. You will find several units on the top deck of multi-storey car parks!

Our containers also provide the opportunity for storage to be delivered to your client, developing the idea of portable storage. Placing units on their land and providing you with a new opportunity to expand your existing business.

Great value. With the price escalation of shipping containers, BOS Containers provide an excellent alternative and add to your profitability. To provide an idea of cost, 2m x 3m units in the UK are around £1450, the price for larger volumes being negotiable.

Our design and quality of product has reduced the cost of ownership to the lowest possible level.

UK Sales Representative
matthewjones@jeldwen.com
Mobile: 0758 465 5828

